

Lace-leaf Hat

sophy t. o'donnell



Project Requirements

- Yarn* Debbie Bliss Alpaca Silk Aran (or any aran-weight yarn).
- Needles* Size 9 (5.5mm): 16" circular and dpns.
- Notions* Stitch markers and tapestry needle.
- Gauge* Approximate 16 sts and 18 rows = 4" (10 cm).

Pattern Description

This pattern contains instructions for knitting the lace-leaf hat in child and adult sizes. Both hats begin with twisted-stitch ribbing for 7 rows (about 1.5"). The child-sized hat follows the Lace-leaf Charts for the Body and Crown 1. The adult-sized hat follows the Lace-leaf Charts for the Body and Crown 2.

This hat is very stretchy, especially in the Debbie Bliss Alpaca Silk yarn. The smaller size can comfortably fit head sizes from 16" to 22" around. Though, if you want a more relaxed fit, I would recommend making the larger size for head sizes larger than 20" around.

Finished Size Approximately 18" (20") around.

Notes

The lace-leaf pattern repeats with a multiple of ten stitches. For the adult hat, the instructions include two width sizes: smaller (larger).

Important! At the beginning of Rnd 7: Remove the stitch marker, slip the first stitch without knitting it, and place the marker to indicate the new beginning of the round.

Stitch Guide

ktbl Knit the stitch through the back loop.

ptbl Purl the stitch through the back loop.

ssk Slip one stitch knit-wise, slip another stitch knit-wise, pass stitches back onto left needle, and knit the two stitches together through-back-loop.

sk2po Slip one stitch knit-wise, knit the next two stitches together, and pass the slipped stitch over it.

Instructions

Child-sized hat

CO 70 sts. PM and join for knitting in-the-round.

Rnd 1-7 *ktbl, ptbl; rep from * to end.

Next Rnd k all sts.

Next Complete one repeat of the Lace-leaf pattern chart for the Body (Rnds 1-16). Then, complete Rnds 1-7. Next, follow the chart for Crown 1. Cut the yarn, leaving a tail approximately 6-10" long for finishing.

Adult-sized hat

CO 70 (80) sts. PM and join for knitting in-the-round.

Rnd 1-7 *ktbl, ptbl; rep from * to end.

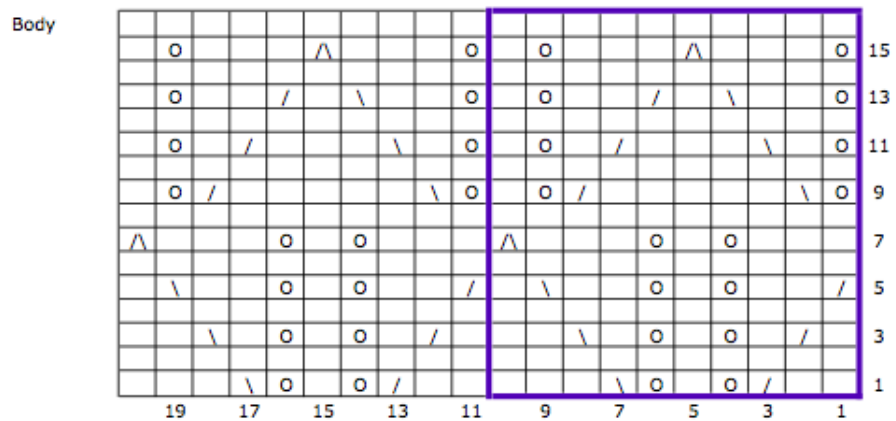
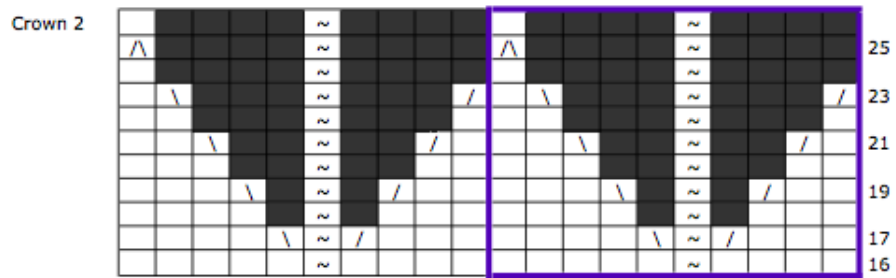
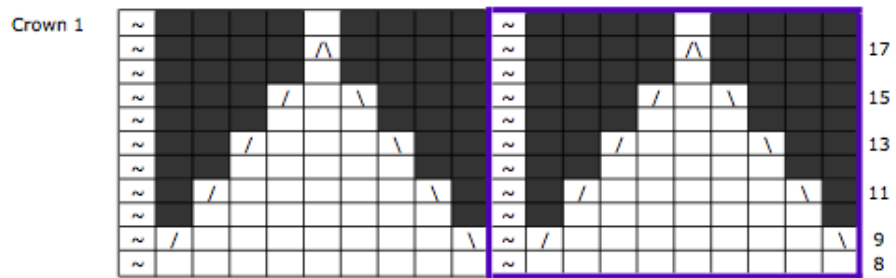
Next Rnd k all sts.



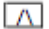
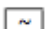


Next Complete one repeat of the Lace-leaf pattern chart for the Body (Rnds 1-16). Then, complete Rnds 1-15. Next, follow the chart for Crown 2. Cut the yarn, leaving a tail approximately 6-10" long for finishing.

Finishing

To finish, use a tapestry needle to insert into each stitch knit-wise. Pull the tail to gather the stitches together. Insert the end of the yarn into the hat and weave in the loose ends. Block the hat.

Lace-leaf Charts



 knit	 k2tog	 sk2po
 ptbl	 ssk	 no st